

stryker



See your patients
in a whole new light

**1688 Advanced Imaging
Modalities (AIM) 4K Platform**

Introducing the first Fluorescence 4K
visualization system

Why use **fluorescence**?

Blood flow is one of the most important factors in tissue healing. Fluorescence imaging with ICG means seeing beyond the naked eye, allowing the surgeon to visualize tissue perfusion and aim for the best patient outcomes possible. ICG has been proven in over 300 clinical articles to aid in the visualization of blood flow, potentially mitigating the risk of complications caused by poor perfusion. ICG is also utilized to identify biliary anatomy, providing confirmation and confidence in surgical decision making.¹



Every mode and setting is activated with the touch of a button on the 1688 camera head

SPY Modes

Image capture

Brightness

Hub function

Video capture

Zoom control

Light source

Device Control



With Stryker AutoLight technology, you're never left in the dark. Automatic light adjustment maintains consistent lighting regardless of distance from tissue or subject. The 1688 AIM 4K Platform features enhanced visualization, leading to confident surgical decision making.

Introducing the **future of visualization**

Brilliant 4K Display

Consistently bright, crystal-clear images

1688 Camera

Native 4K resolution

PneumoClear all-inclusive insufflator

Smart inflow/outflow management with heated, humidified, and smoke evacuation all-in-one tube set

L11 with AutoLight

Improved light control and maintenance*

Printer

Print from 4K or HD

Advanced Imaging Modalities

SPY fluorescence enables real-time imaging of perfusion, blood flow, and biliary anatomy

SPY-PHI

Portable handheld imager for SPY fluorescence technology in open surgery

Connected OR Hub

Total control of the visualization system, easily customized for a more consistent surgical environment

Powerful and versatile CCU

Adapts to multiple specialties

VPI

Connection for SPY-PHI for open visualization and tissue assessment

Connected OR Cart

Optimized OR footprint with enhanced maneuverability

- Not yet commercially available

*Compared to previous generations



Brilliant Visualization

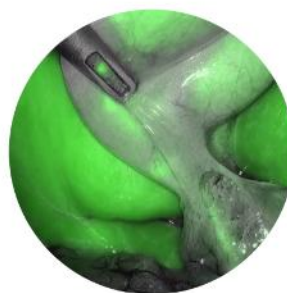
Advanced Imaging Modalities

Only the Stryker 1688 AIM 4K Platform brings together real-time imaging of anatomy, automated light control and insufflation with heating, humidification and smoke evacuation all in one system for a seamless workflow.



SPY Overlay

4K fluorescence overlaid on a white light image



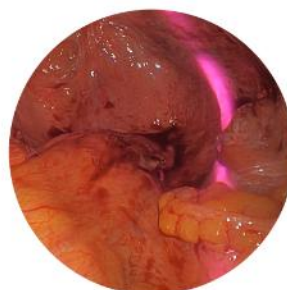
SPY ENV

4K fluorescence displayed in greyscale and green



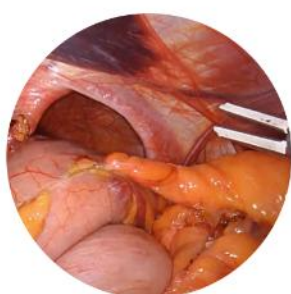
SPY Contrast

High contrast visualization of 4K fluorescence in black and white



IRIS

Lighted ureteral stents designed to mitigate the risk of ureteral injury



AutoLight

Automatic light adjustment to maintain consistent lighting throughout procedure

Created
to connect

**1688 Advanced Imaging
Modalities (AIM) 4K Platform**

Introducing the Connected
OR Hub, the center of your
smart operating room





Our Connected OR Hub lives up to its name, connecting you to everything and everyone you need to assure a consistently outstanding **surgical experience**.



Hub to EMR

Connect to your electronic medical record with direct HL7 integration

Uni-directional and bi-directional integration



Hub to PACS

Save images to your PACS system with DICOM integration

Pre-operatively pull patient information from the modality worklist (MWL) for a more effortless experience



Hub to FTP

Wirelessly send to a secure folder on your hospital's network



Hub to Media Asset Management

Securely edit, archive, and share your surgical images and videos



Hub to PowerShare

Access your surgical images from anywhere, at any time from the cloud



Hub to iPad

Use Stryker's My Patient Hub iPad application to share custom post-operative reports and images with patients



4X the resolution
4X the processing power

Infinite possibilities

Smart 4K features

The Stryker Connected OR Hub allows you to stream, capture, record, and print with 4K or HD.

4K fluorescence imaging

4K intelligent lighting with AutoLight

4K capture and record

4K storage

4K to iPad

4K video playback on Hub

4K video overlays

Secure by design: The Connected OR Hub has been updated with several features that improve network security, such as OS hardening, application whitelisting, network vulnerability scans, write protection, and data encryption.

The Connected OR Hub

Control your devices with ease

Now you have total control of the entire visualization system from the surgical field—whether that's from the camera head or with just your voice, it's up to you. The new intuitive interface and improved workflow matches real-world application, making control faster and easier than ever before.

Capacitive touch screen technology responds to your touch in half the time. This is the Connected OR Hub that listens and responds to your every command.

Just the way you like it

Stryker's Surgeon Profiles allow customized settings to auto-populate before you even enter the OR, creating a consistent surgical environment.

Patient records and surgical media are available at your fingertips—you choose where and how you want to access it.

Make your best decisions

This cohesive and comprehensive collaboration between instruments and data enables a consistently outstanding surgical experience.

This means fewer variables while having access to all the tools and information required to make the best possible clinical decisions.

Brilliant Visualization

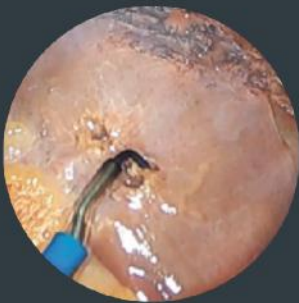
Introducing PneumoClear, the smart insufflator



The first all-inclusive
insufflation system

Consistently clear images¹

Integrated smoke evacuation with smart inflow and outflow management designed to maintain stability while actively evacuating smoke.



**Conventional Insufflation
without smoke evacuation**



**PneumoClear smart
insufflation with smoke
evacuation**

Control of your environment

Addresses fluctuations in pressure with advanced insufflation technology and newly developed operating modes.

All-in-one integration

All-inclusive system of heated and humidified CO₂ with active smoke evacuation in a single lightweight and flexible tube set.

¹1000902558, Image Clarity - A PneumoClear Study

One platform. **Endless possibilities.**

Stryker's 1688 AIM 4K Platform is the first system with fluorescence imaging designed into the 4K platform. Everything is managed by the Connected OR Hub, giving you seamless connectivity to images, data, and specialists you need.

Now your surgical teams can see in greater detail than ever with superior image clarity, more accurate color reproduction, and enhanced light quality. And with 4K Fluorescence, we've taken visualization beyond the limits of any previous technology.*

stryker

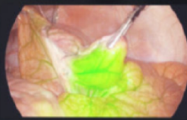
stryker



CONNECTED OR HUB

Surgeon Patient Info Room Setup Timeout Capture Media End Case

HDMI In 1 (UHD 4K)



I688 4K CAMERA SYSTEM WITH AMI



LAPAROSCOPY

AMI

WB



CAMERA





Minimally Invasasive Surgical Solution

Visualization and Documentation System

Arthroscopy

Laparoscopy

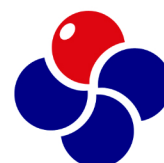
Gynecology

Resectoscopes

Fluid Management

Hysteroscopes

Urology



داهی طب (سهامی خاص) **Dahiteb**

نماینده انحصاری Stryker آمریکا در ایران

www.Dahiteb.ir

تلفن : ۰۲۱-۵۷۶۳۲۰۰۰

فکس : ۰۲۱-۵۷۶۳۲۲۲۱